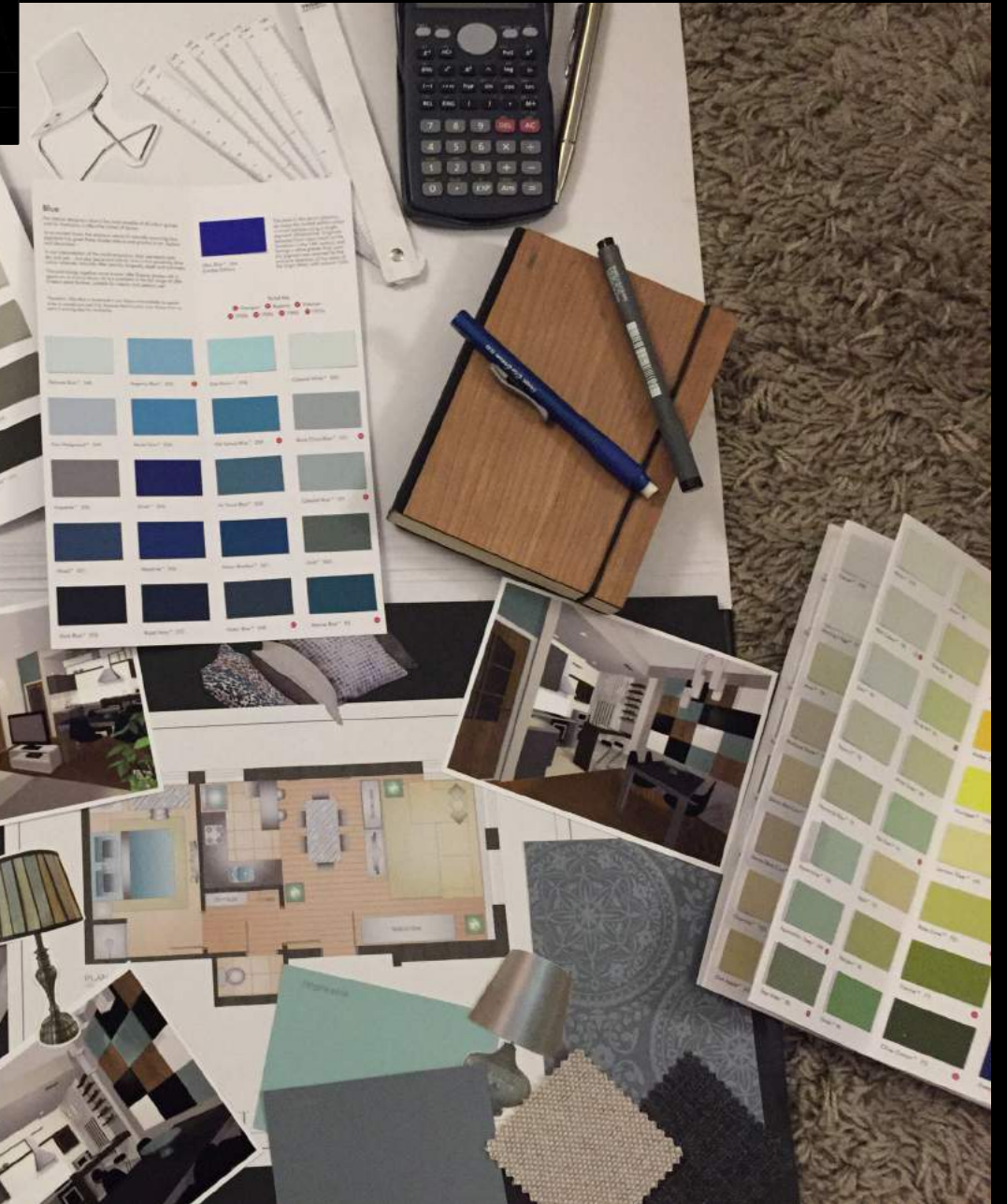


The background is a collage of various textures and colors. It features teal, black, wood, and concrete textures. The word 'PORTFOLIO' is written in a light teal, sans-serif font across the black and white background.

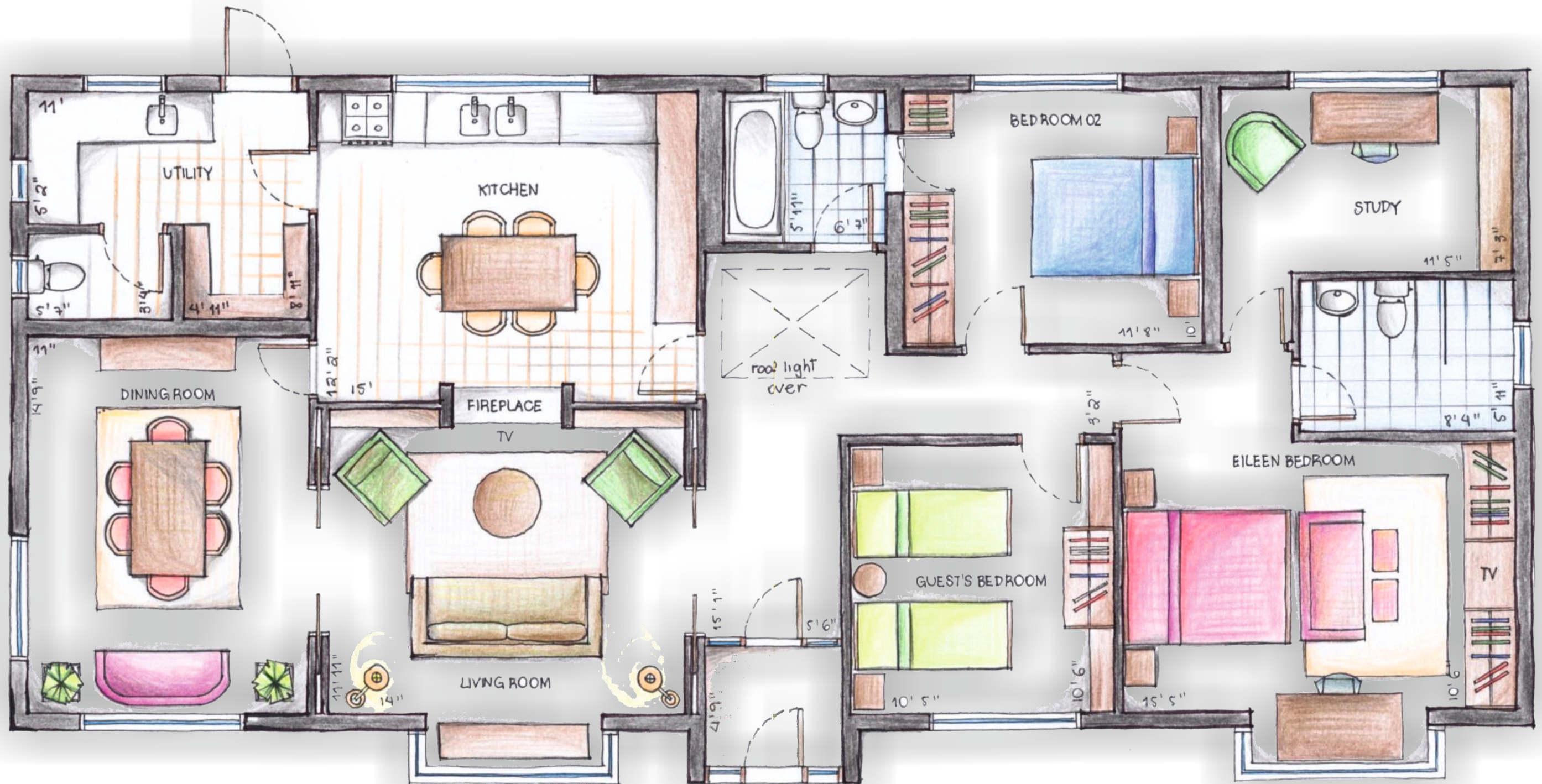
PORTFOLIO

CAROLINE MAZARO





INTERIOR DESIGN
Flat in Amsterdam



This is a renovation of a house located in Athlone - Ireland. The clients were looking for a design that would bring together comfort and sophistication preserving the original identity of the house. The spaces within the house were designed to make the most of their use. The living room received two built-in sliding doors connecting all the social area greatly, which later was modified connecting also the backyard.

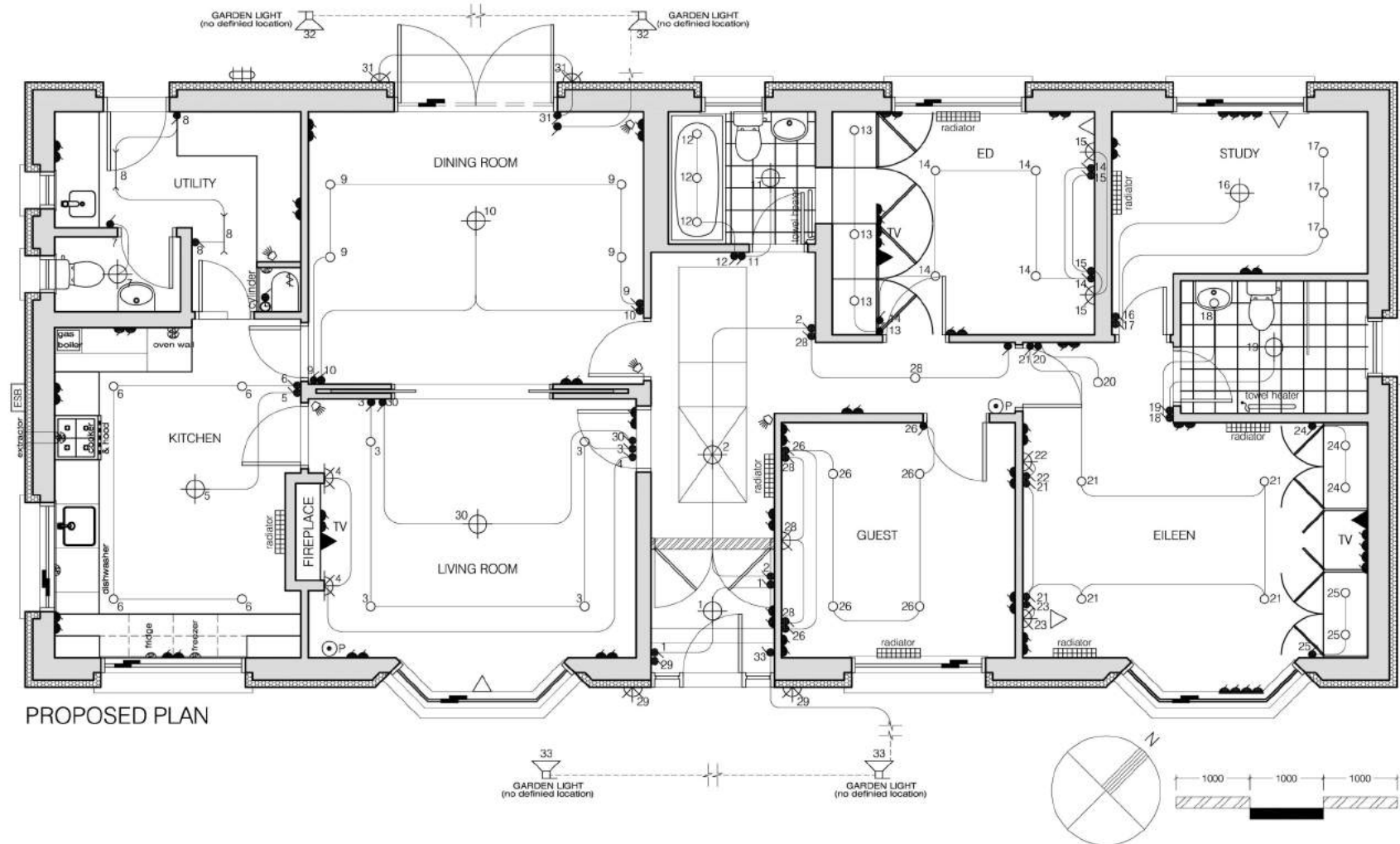
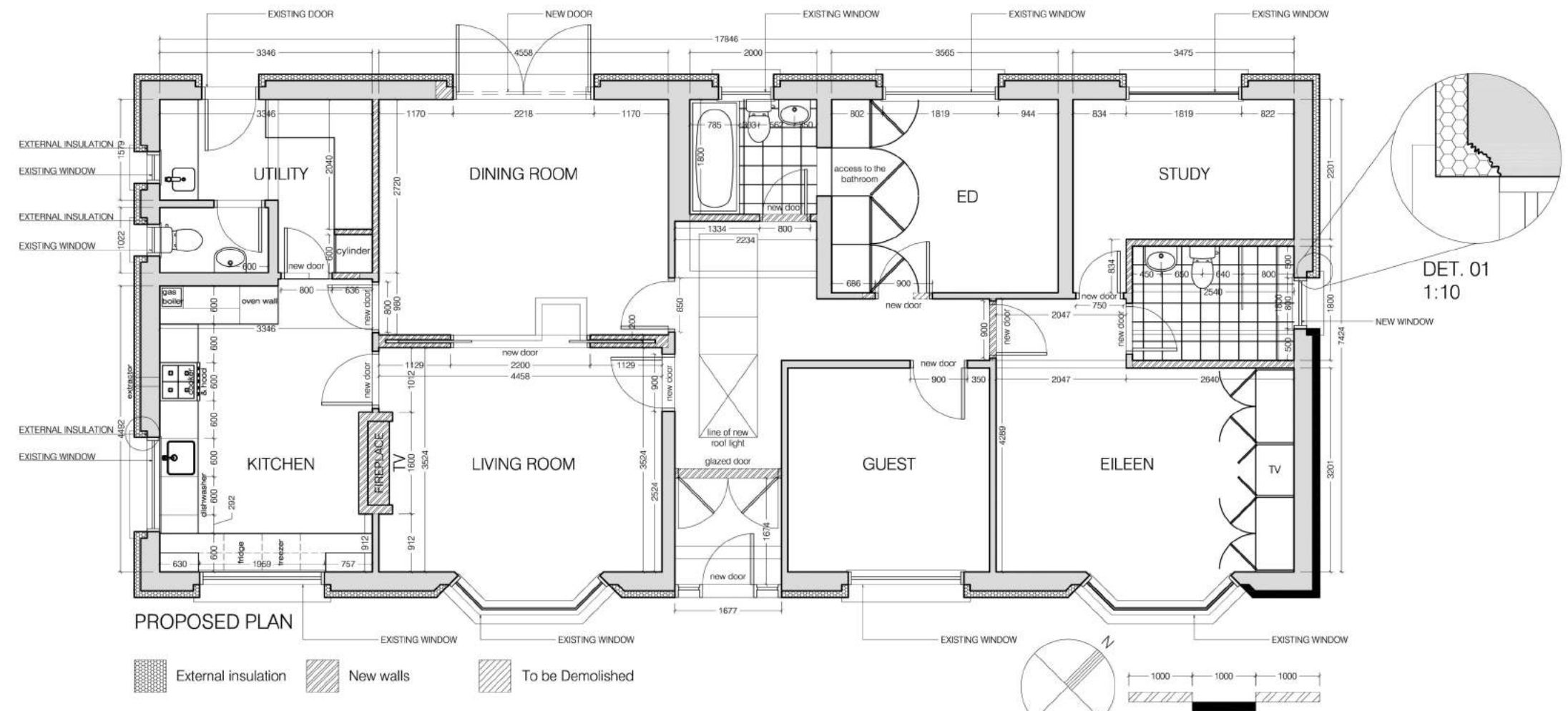
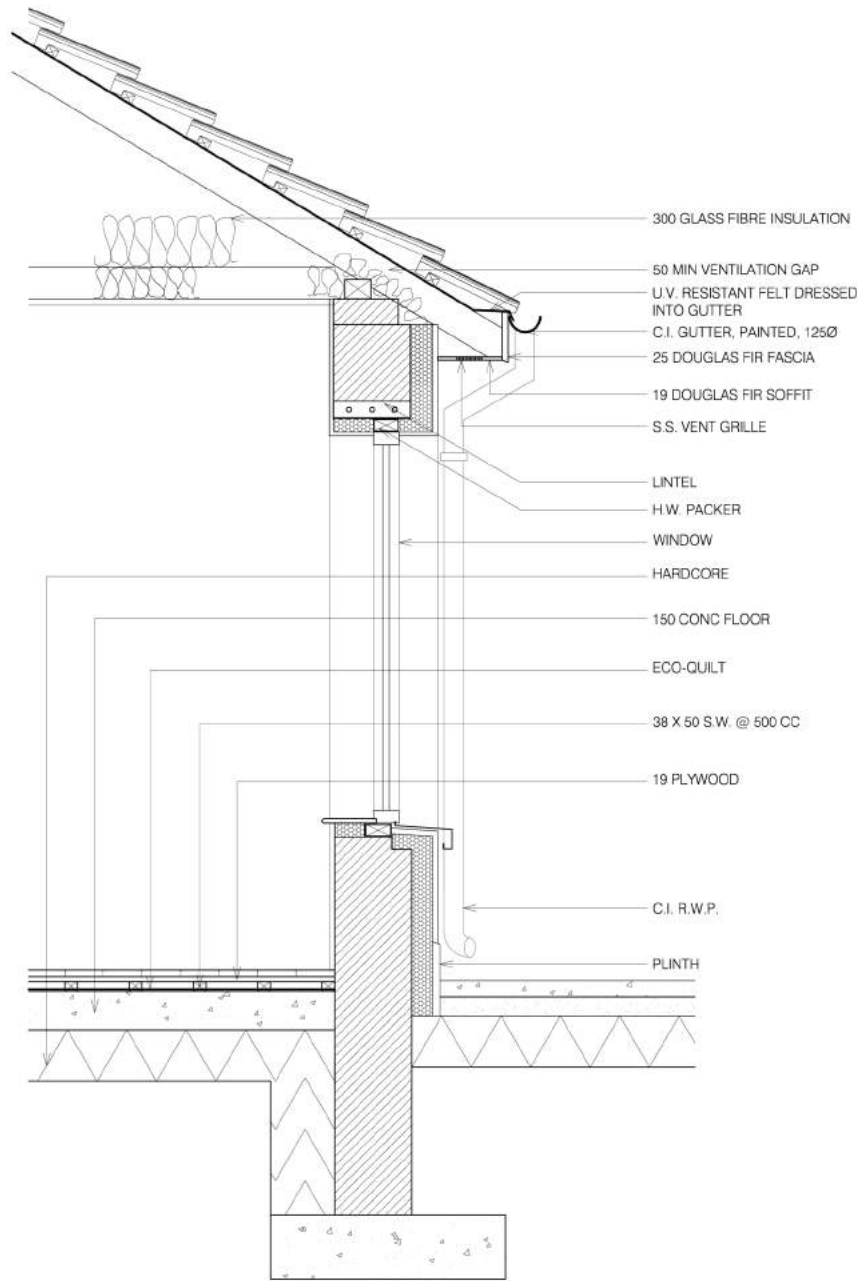
The house was entirely renovated, since flooring, walls, installations, ceiling and roof. The house gained new windows, including a change to the former bay windows, which now have a new shape providing more space inside the house.

The entrance hall gained a second door creating a small porch. The kitchen is spacious and is served with a nice utility room. A fireplace was placed between the kitchen and the living room making them cosy and welcoming.

Previously there was only one bathroom, which was renovated and gained a second door providing access through the second bedroom. The master bedroom was extended and also gained a new ensuite bathroom and study, it resulted in an stunning spacious and cosy bedroom, giving the client the comfort she wanted.

The hall has a new roof light now providing more light to the corridor. For guests, there is a guest's bedroom and if needed, the studio is equipped with a foldable bed, which on the day-to-day is kept hidden within a bookcase.

The external area was decorated with a nice garden at the front yard and a boat's shed was designed for the backyard completing the project with success.



HOUSE IN ATHLONE
(Ireland)

(AFTER)



(BEFORE)



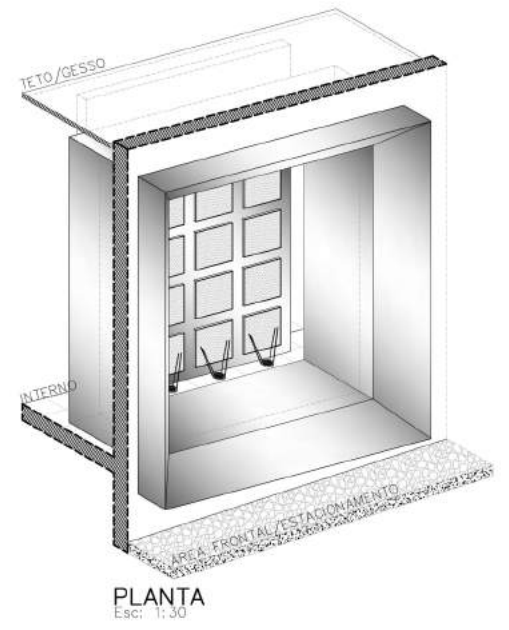
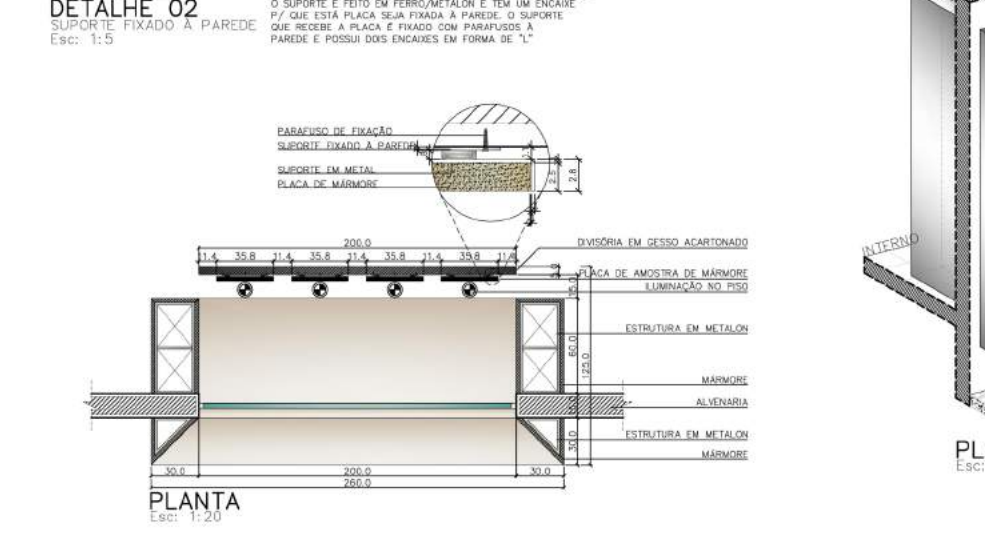
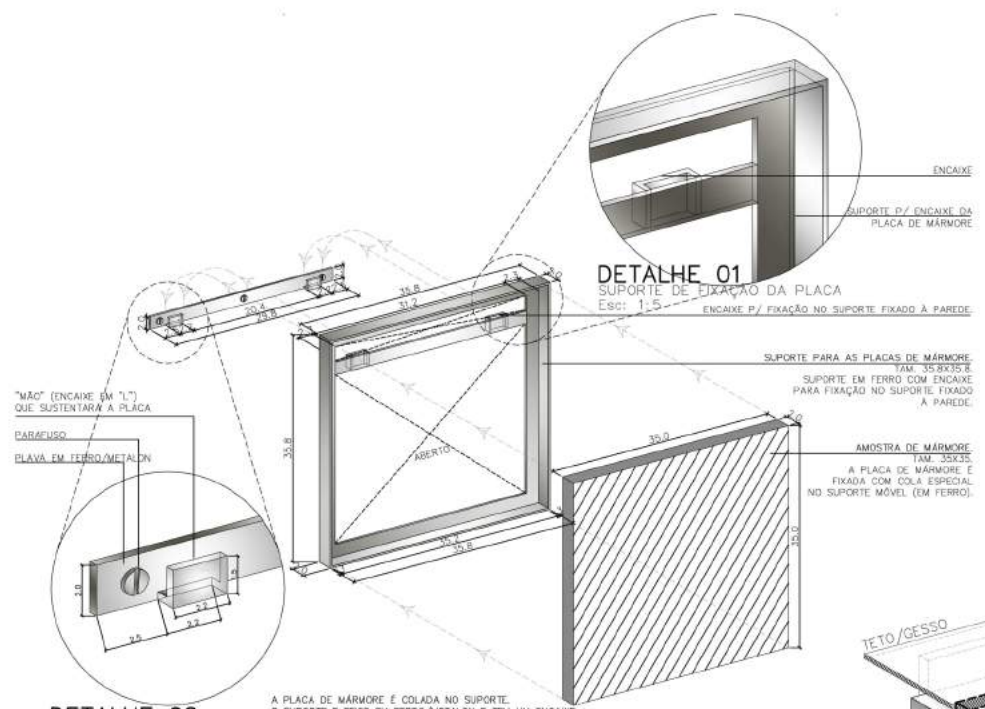
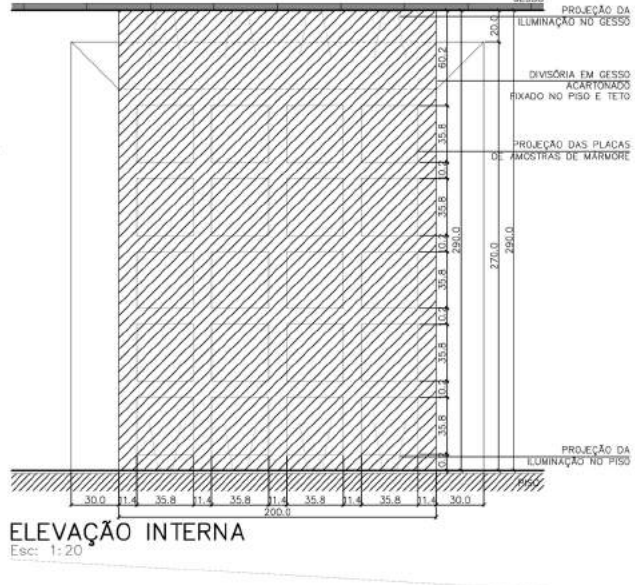
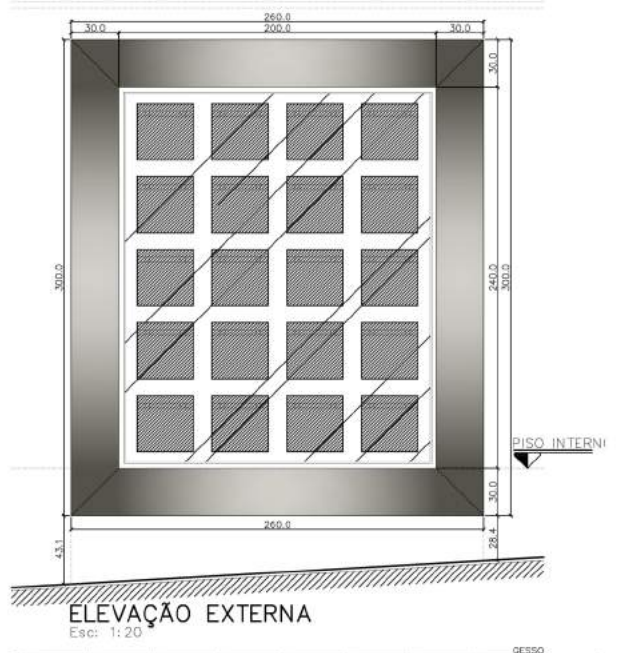
COMMERCIAL DESIGN
(2008)



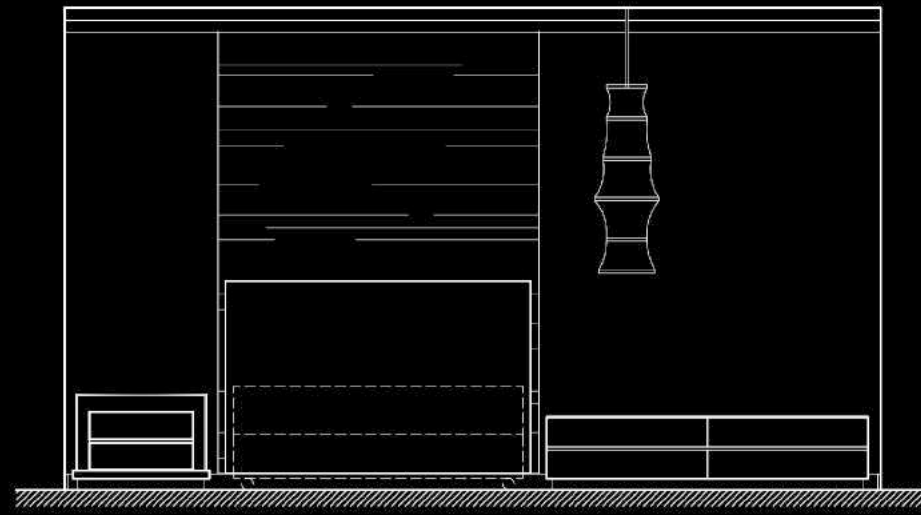
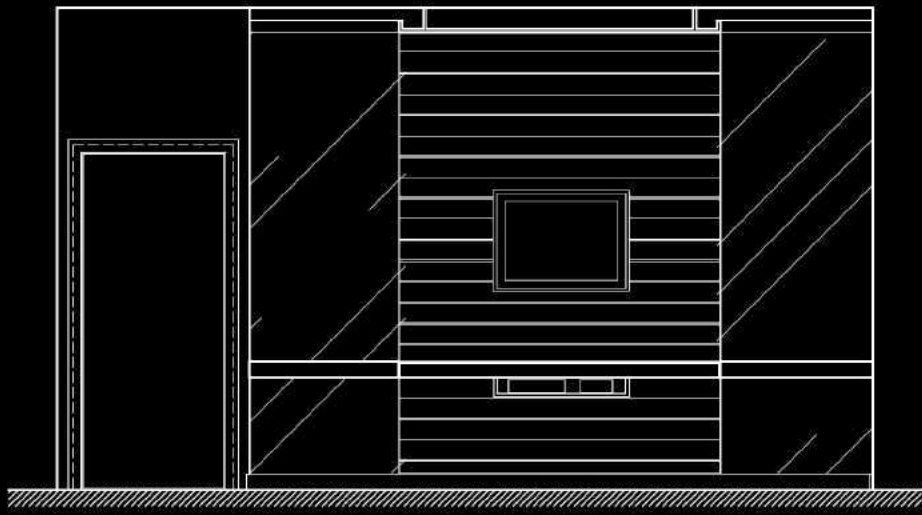
The brief I received from my first meeting with the clients was: "We have been in this hive of activity since 20 years ago and we want to renovate the look and give a new identity to our store". My proposal was to renovate with classy elements and colours but to keep the original identity, which was the ingredient for this store to have kept a good clientele over the years. I gave a new and fresh look for what worked very well for them in terms of functionality and operations.

The main work in this project was to renovate the core structure of the building, all the installations and finishes needed to be replaced and in a tight schedule, but with a good project management and an efficient contractor everything was delivery on time.

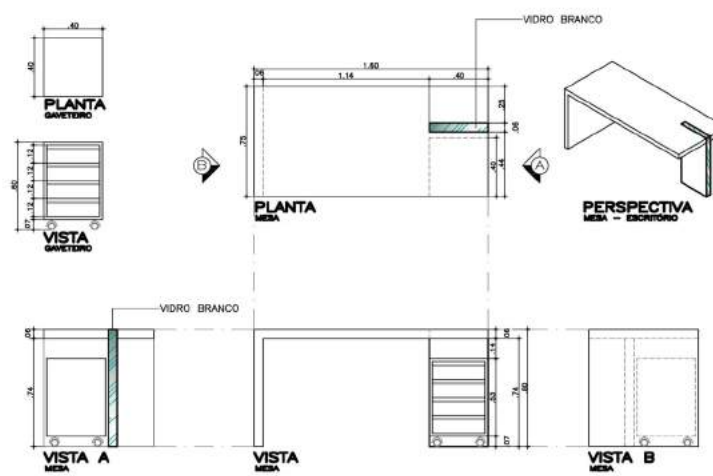
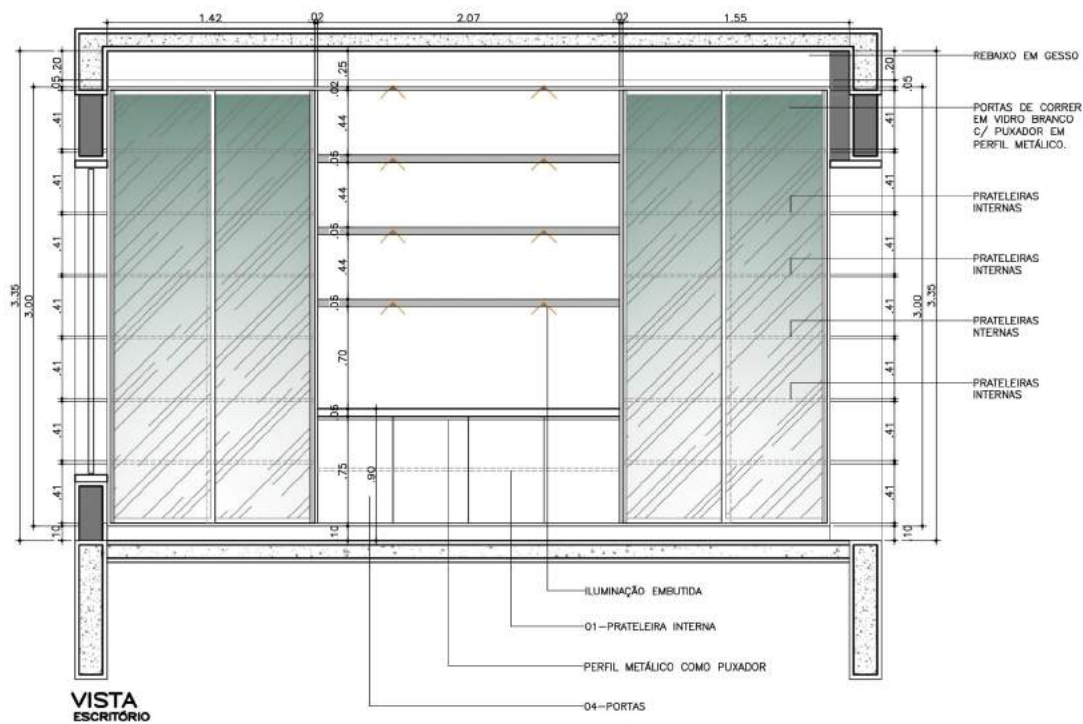
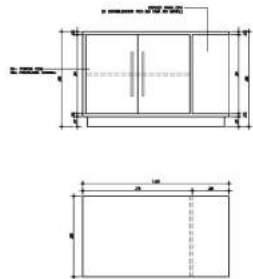
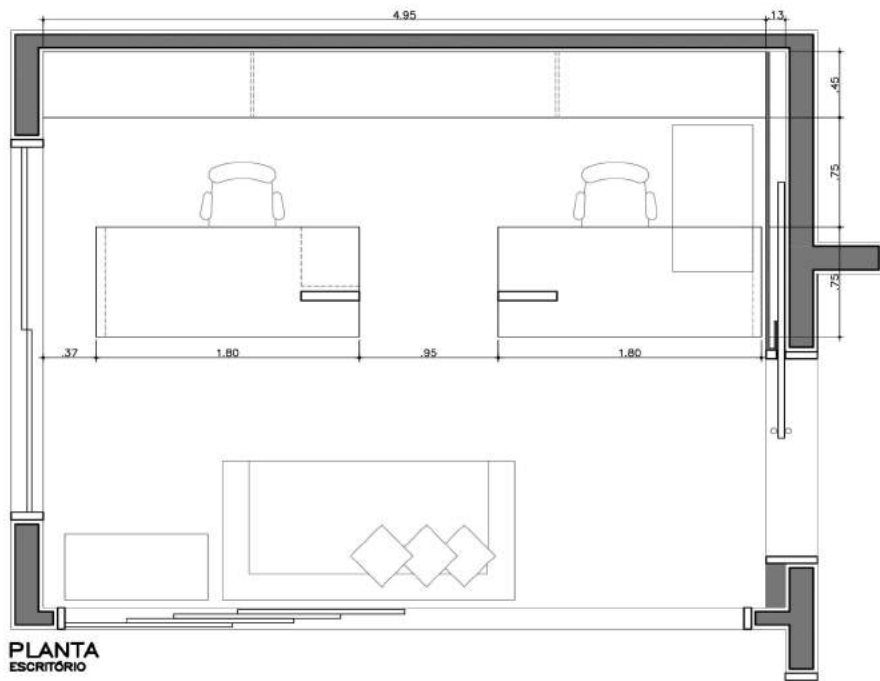
The feedback given by my clients was: "We are delighted by the elegance and clean feeling in the store now, the furniture is just perfect for our needs and the comfort in the fitting room make the clients to feel homey and pleased".



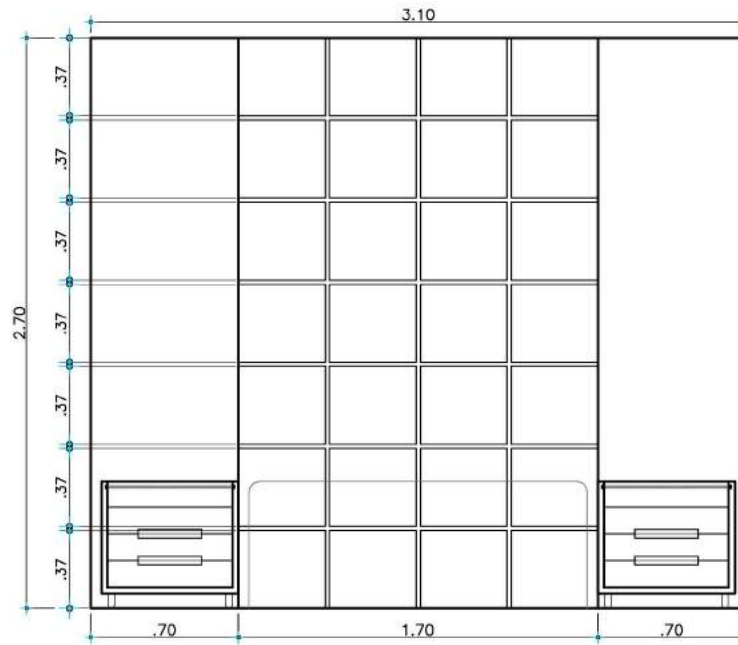
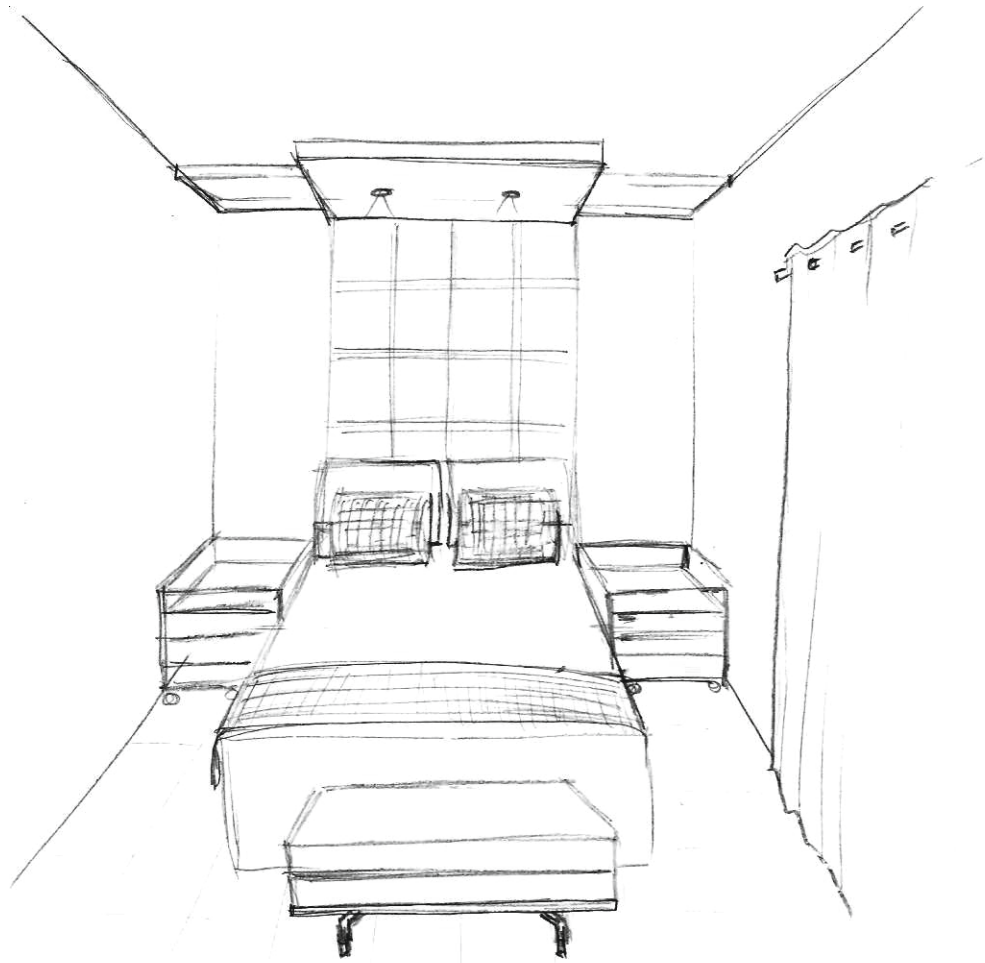
SOLUTION FOR A MARBLE DISPLAY IN A SHOP



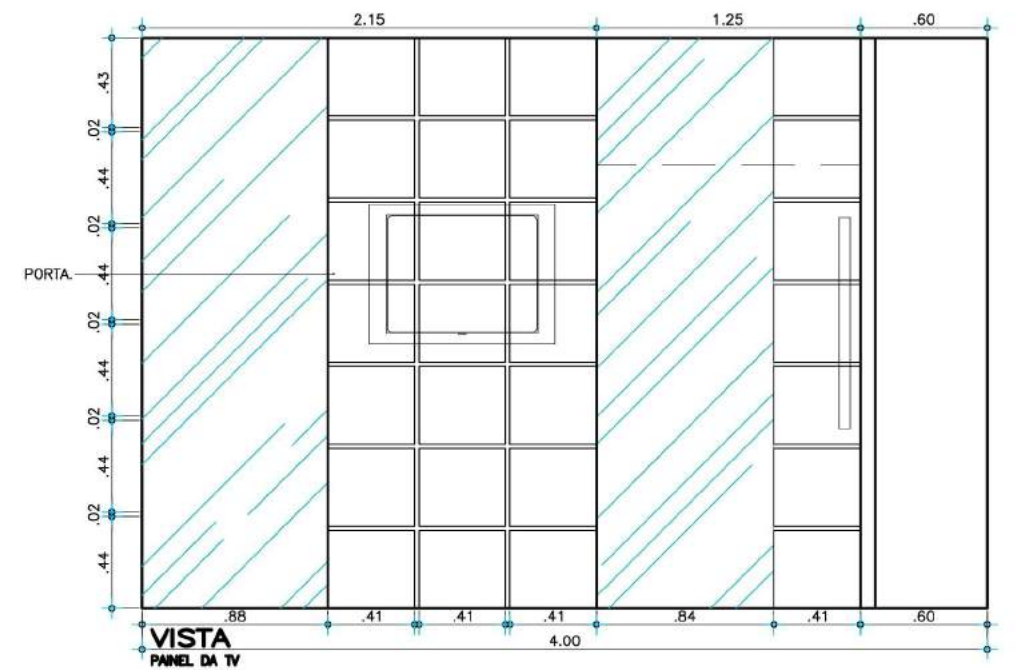
INTERIOR DESIGN
(master bedroom)



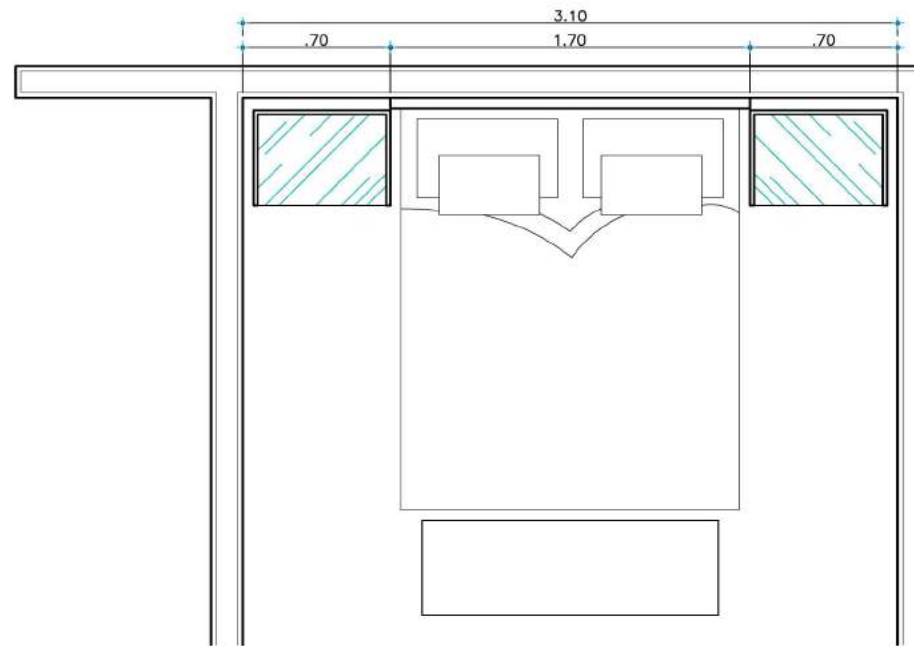
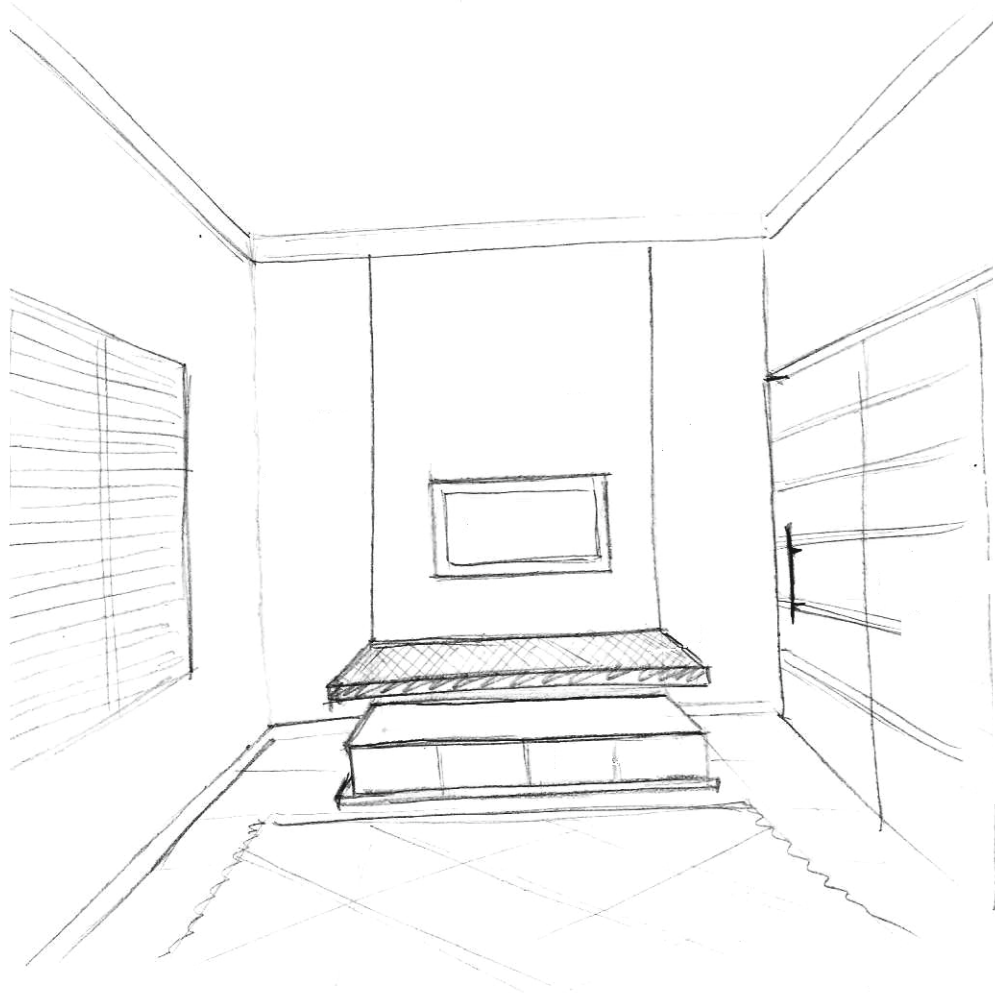
INTERIOR DESIGN
(studio/home office)



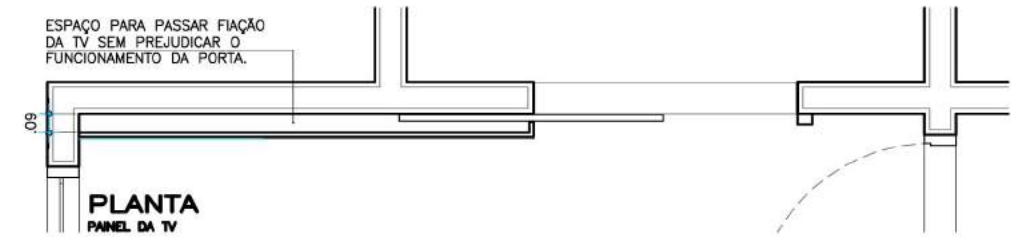
VISTA
CABECEIRA - QUARTO DO CASAL



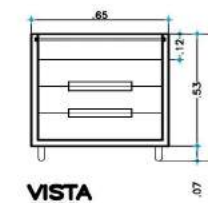
VISTA
PANEL DA TV



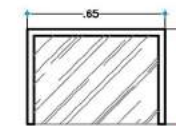
PLANTA
QUARTO DO CASAL



PLANTA
PANEL DA TV



VISTA
CRADO



PLANTA
CRADO



PERSPECTIVA
CRADO

INTERIOR DESIGN
(bedroom)

(BEFORE)



(AFTER)

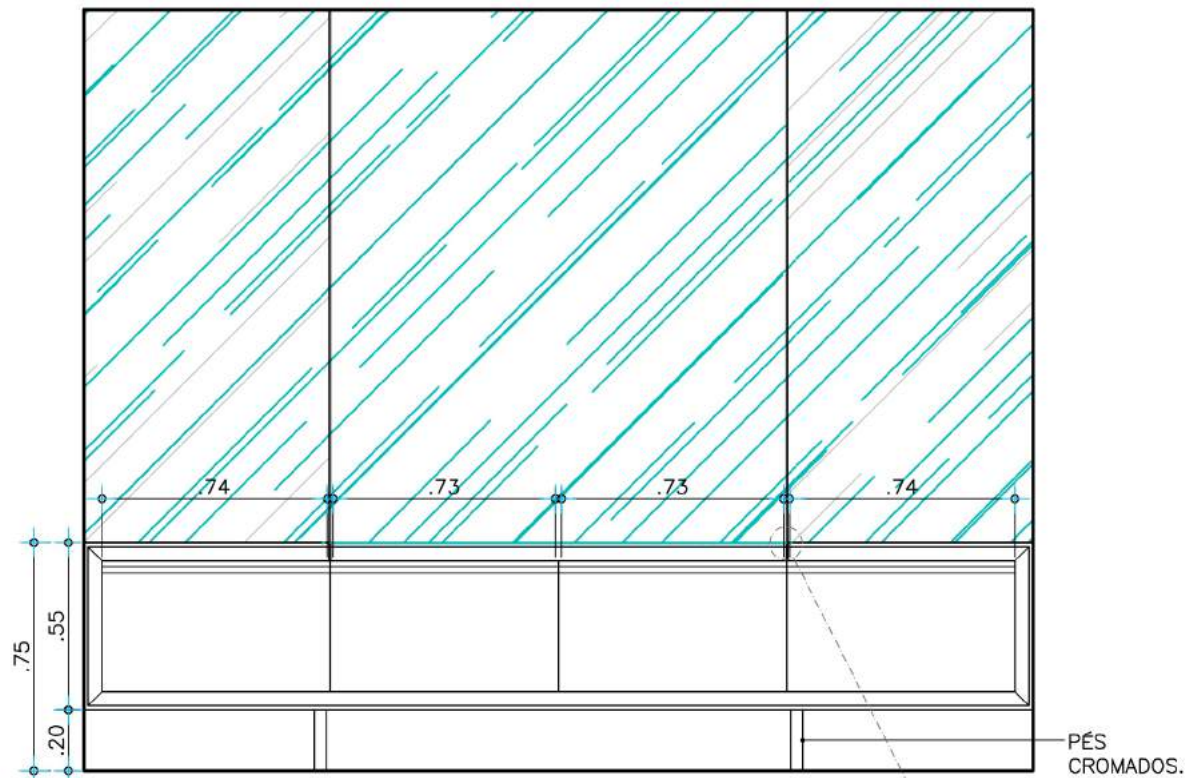


When talking about renovation we are not only talking about styling a space but also eliminating what was old, outworn and removing what does not bring any good facet for a space. The design of this apartment interior involved a new ceiling, the previous was a wooden boarded ceiling, dark and vintage that was part of the architectural style but did not bring any benefits for the space. The solution was to cover it with white plasterboard, details in gypsum and halogen spotlights to highlight the spaces. Working with a plain white colour is perfect for low ceilings, it amplifies the sensation of space and allows for creativity in what is under it.

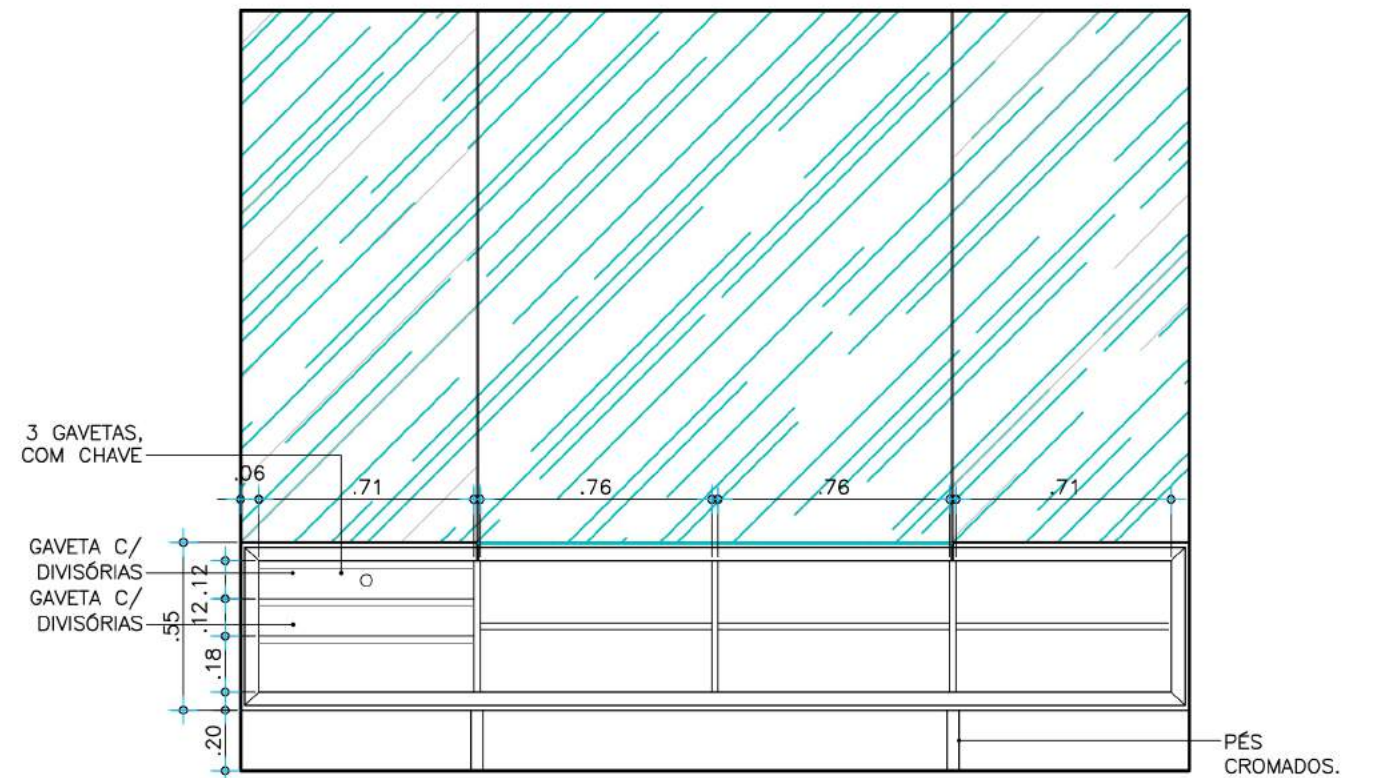
The design also involved designs for bespoke furniture, appointment of colours and wallpapers, and a flooring restoration. The colour palette for this project was warm, mostly cream and brown. The colour brown is an elegant colour per se and it gives a sense of stability and quality, perfect for creating a comfortable and intimate space.



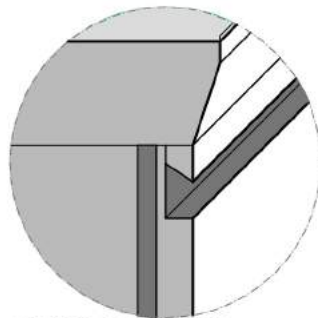
APARTMENT RENOVATION (2008)



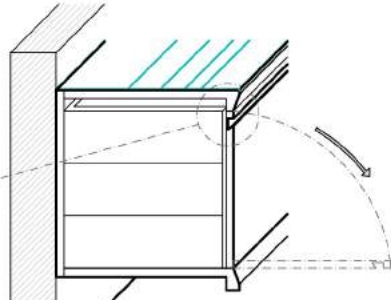
VISTA INTERNA
MÓVEL SALA DE JANTAR
ESC.: 1:25



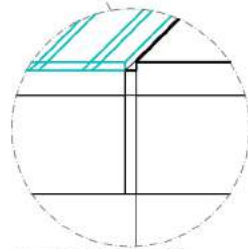
VISTA INTERNA
MÓVEL SALA DE JANTAR
ESC.: 1:25



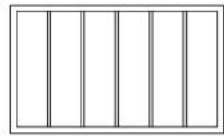
DETALHE DO PUXADOR
S/ ESC.



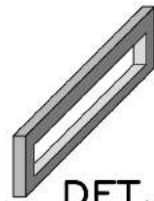
CORTE AA
S/ ESC.



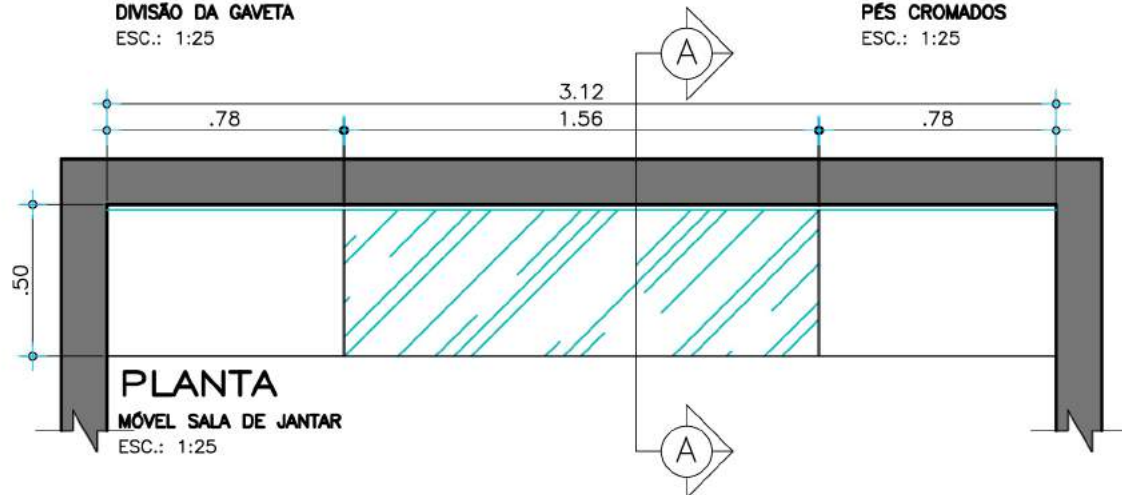
DETALHE DO FRISO
S/ ESC.



DET. 01
DIMENSÃO DA GAVETA
ESC.: 1:25

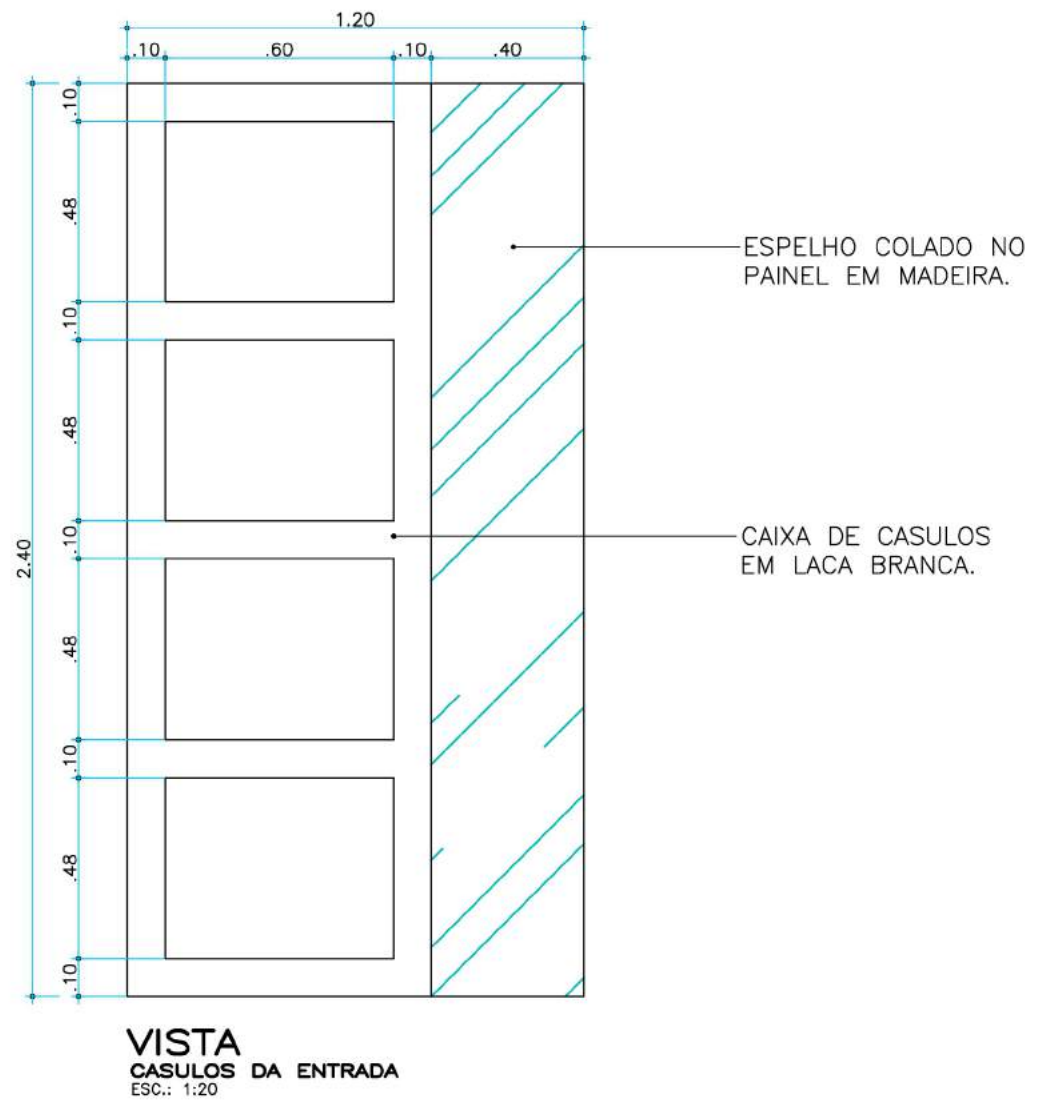
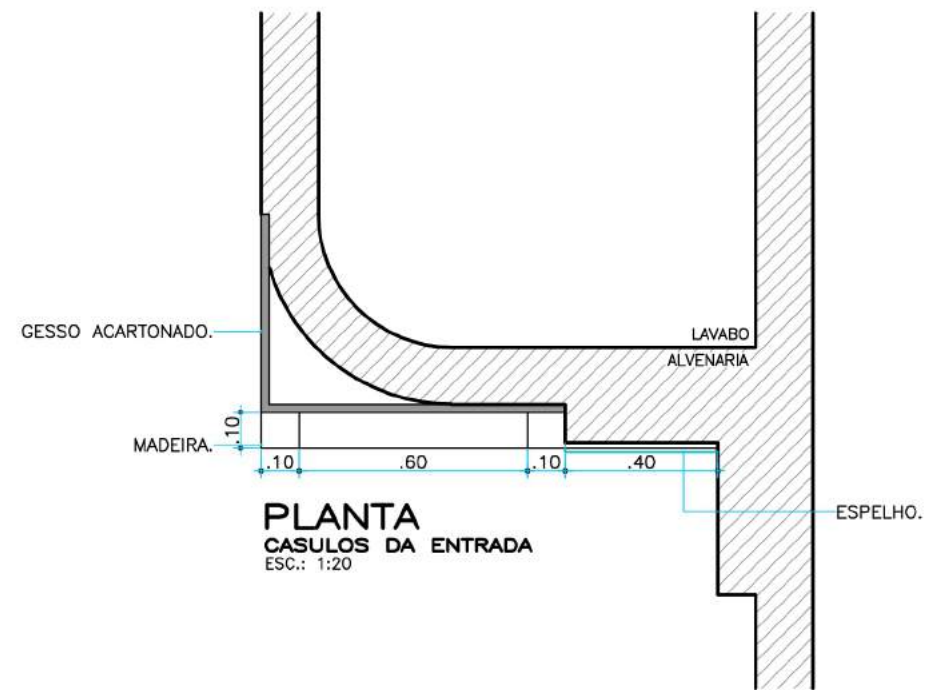


DET. 03
PÉS CROMADOS
ESC.: 1:25

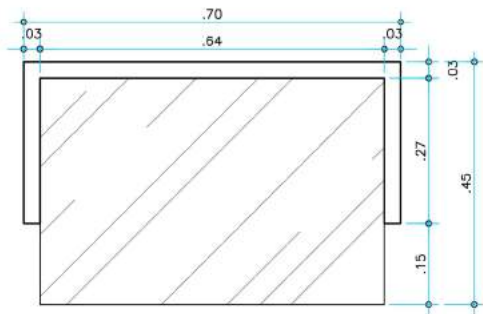


PLANTA
MÓVEL SALA DE JANTAR
ESC.: 1:25

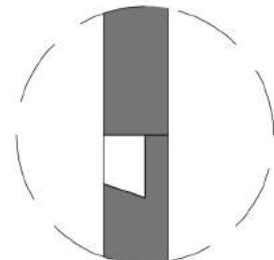




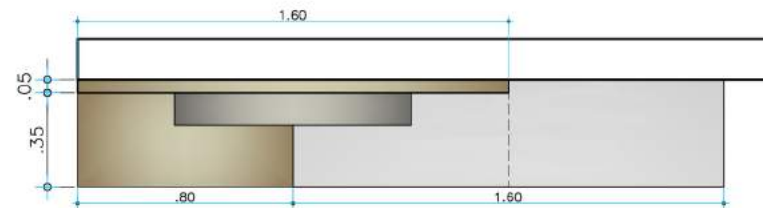
BESPOKE FURNITURE



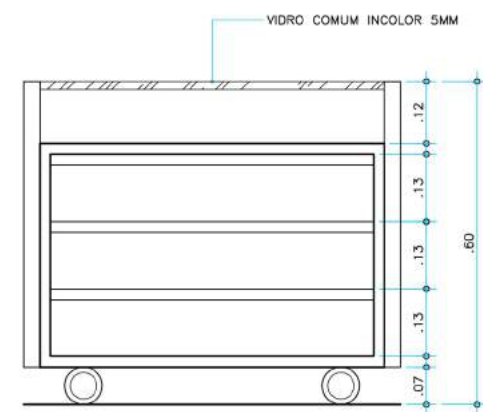
PLANTA
CRIADO
ESCALA 1:10
MEDIDAS EM CENTÍMETROS



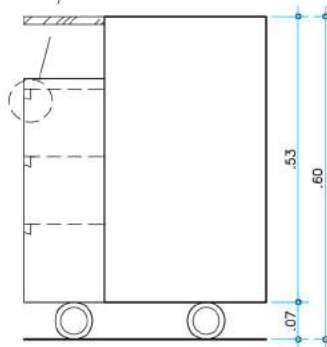
DETALHE
CAVA DAS GAVETAS



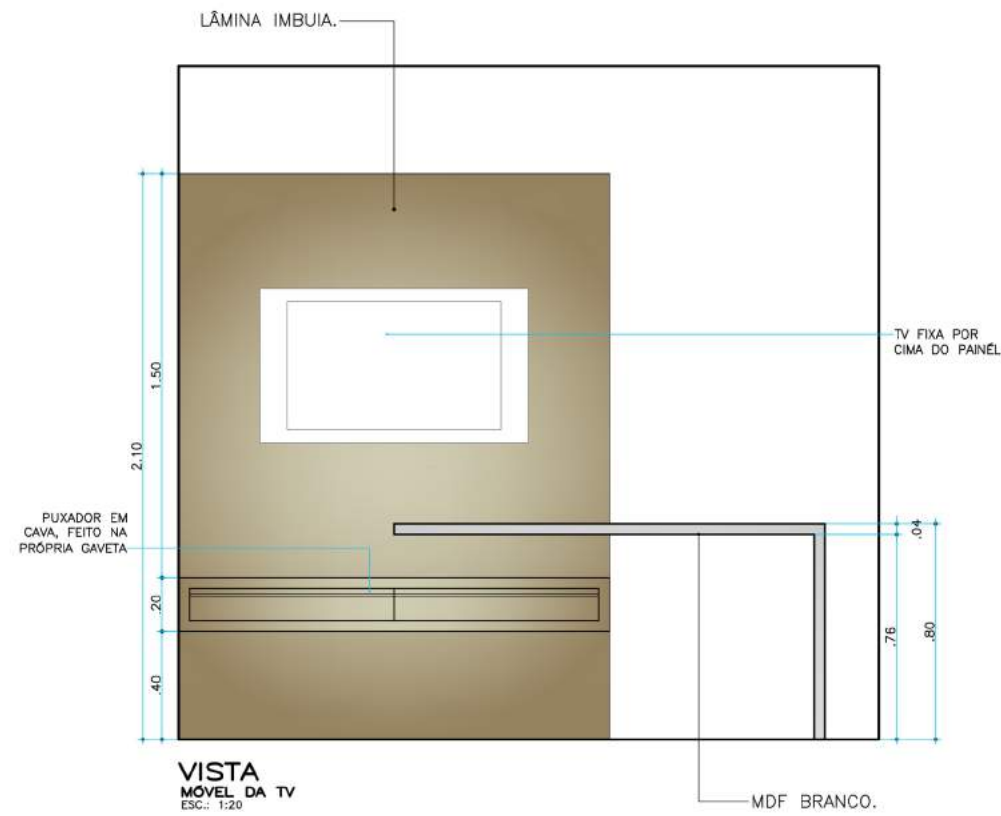
PLANTA
MÓVEL DA TV
ESC.: 1:20



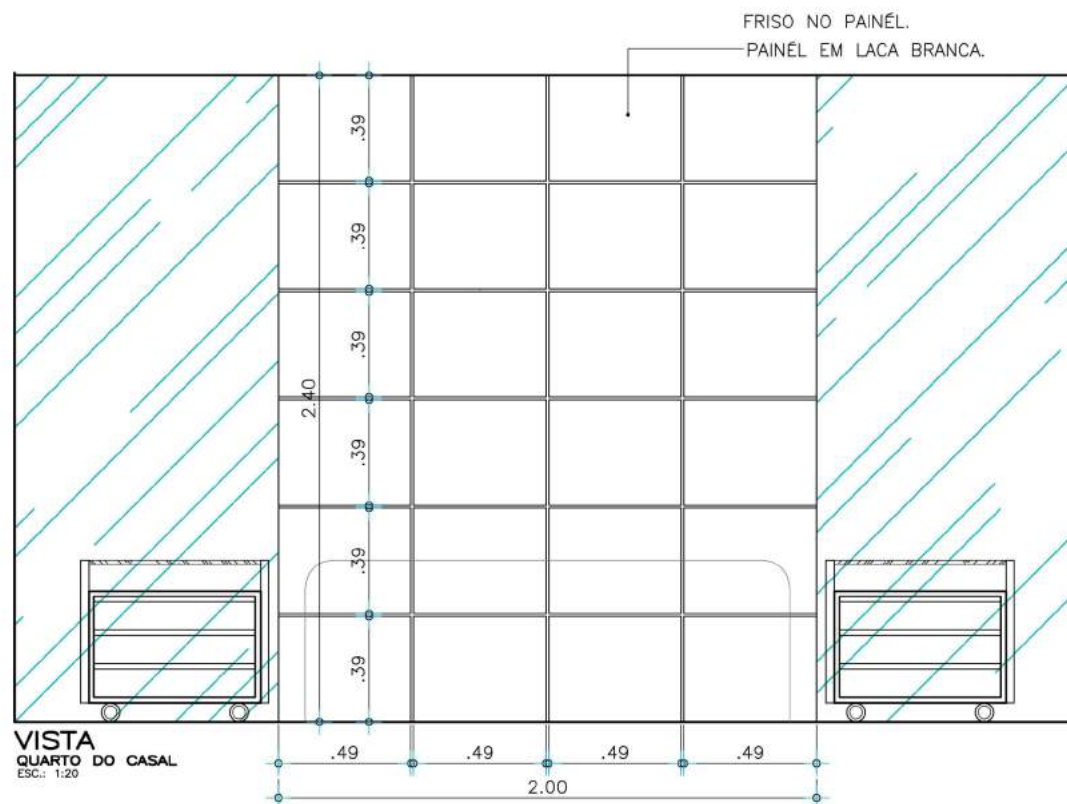
VISTA FRONTAL
CRIADO
ESCALA 1:10
MEDIDAS EM CENTÍMETROS



VISTA LATERAL
CRIADO
ESCALA 1:10
MEDIDAS EM CENTÍMETROS

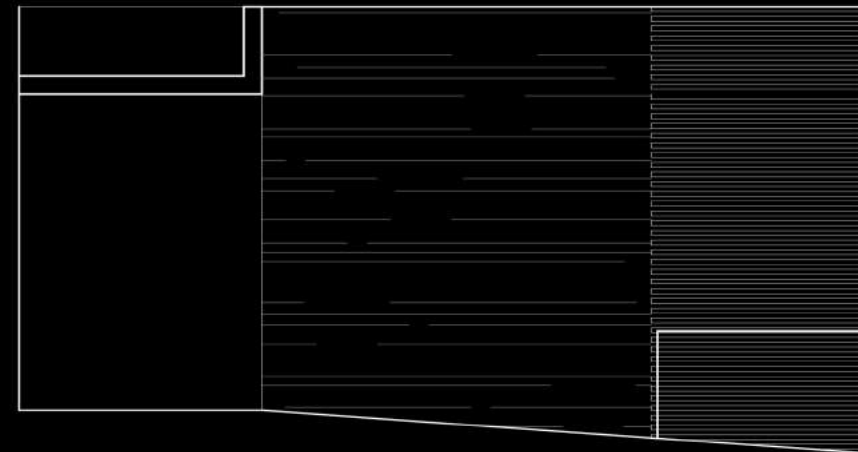
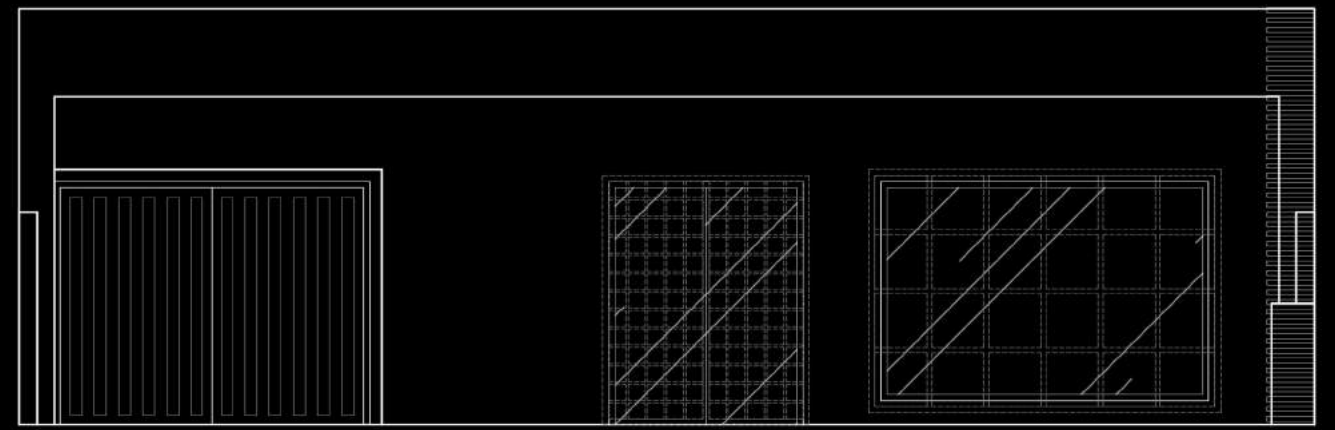


VISTA
MÓVEL DA TV
ESC.: 1:20



VISTA
QUARTO DO CASAL
ESC.: 1:20





COMMERCIAL DESIGN



APARTMENT DECORATION





APARTMENT DECORATION
(2011)





APARTMENT DECORATION
(2010)



APARTMENT DECORATION
(2008)

